

THE

PowerLines

REPORT

DMEA

1 |  Electrical Safety Month2 |  Get Current: Lawn Tools3 |  Fiber is the Future4 |  Bite of Reality Fair

May 2023

Diggin' in to National Electrical Safety Month



Jack Johnston, CEO

Safety – it's one of DMEA's core values. It's also my focus for this month's message because May is nationally recognized as Electrical Safety Month. DMEA defines safety as relentlessly protecting our most valued resources, including our employees, members, contractors, the public, and infrastructure.

For us, safety is fundamental to the way we do business. Electricity brings light, warmth, and countless technological advances, but it also comes with great risk if not handled appropriately. DMEA prioritizes safety to ensure our employees go home uninjured to their families every day. Just as important is educating our members so you stay safe too. With spring in full force this month, I'd like to share a timely tip – locating underground utilities.

I don't know about you, but with the warmer weather and longer days, the more I have the desire to turn some dirt. But it's all too easy to forget an important safety step in that process. Before you begin any digging project, you are required to call Colorado 811 at least two days in advance to request your underground utility locates.

All underground utility providers, such as DMEA, natural gas, water, sewer, and telecommunications, must locate their underground lines before any project begins that might disturb the ground. The law requiring an 811 call is in place to protect you, utility workers, and contractors from dangers, such as potential electric shock, gas explosion, and exposure to sewage contamination.

It's also good to know where the utility easements are on your property. Easements grant providers, like DMEA, the legal rights to that specific property to install and maintain cables, wires, pipes, and other necessary equipment that bring service to you and your neighbors. If property owners landscape or place items, such as storage sheds or vehicles, within the easement on top of underground utilities, it comes with a risk that a utility might need to remove it to locate or access its infrastructure for repairs, maintenance, or construction. As such, any associated replacement costs would be the property owner's responsibility.

You've probably noticed when underground utilities are marked. You'll see a rainbow of spray-painted lines (in the utility easement) along roadsides or leading out from utility equipment in yards. Next time you're getting started on a project that involves digging, remember to call 811. One call keeps everyone safe.

WHAT DO THE COLORS ON THE GROUND MEAN?

- RED** – Electric Power Lines, Cables, Conduit, and Lighting Cables
- YELLOW** – Gas, Oil, Steam, Petroleum, or Gaseous Materials
- ORANGE** – Communication, Alarm or Signal Lines, Cables or Conduit
- BLUE** – Potable Water
- PURPLE** – Reclaimed Water, Irrigation, and Slurry Lines
- GREEN** – Sewers and Drain Lines
- WHITE** – Proposed Excavation
- PINK** – Temporary Survey Markings

Learn more at www.colorado811.org

GET C[⚡]URRENT

Keeping you plugged in to everything electric.

ELECTRIC LAWN TOOLS

Electric lawnmowers, chainsaws, and hedge trimmers are here to supercharge the way you care for your green haven! Packed with benefits and designed with the future in mind, these eco-friendly tools promise to elevate your lawn care game.

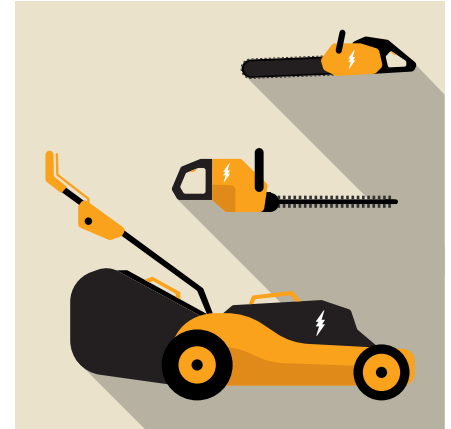
Effortlessly start your tools with a simple button press, eliminating the need for priming or strenuous cord-pulling. Their compact and lightweight design also makes storage and transportation a breeze. But the benefits don't stop there! Enjoy extended work sessions without interruption, thanks to improved battery life. And with fewer moving parts and no need for fuel, they're built to last and require minimal maintenance.

Electric lawn tools have come a long way, offering improved performance, reliability, and efficiency. Join the movement towards a cleaner, greener future and experience the benefits of electric lawn tools firsthand!

Where to buy: Home improvement & hardware stores

Who it's for: Small to medium sized lawns

Extras: Mulching kits, grass catchers, extension poles & more



- ✓ Simple Startup
- ✓ Low Maintenance
- ✓ Compact Storage
- ✓ Lightweight

DMEA ANNUAL MEETING

This is Co-op Country

Thursday, June 15, 4:30 - 8 PM

Cedaredge High School

575 SE Dear Creek Dr.

Cedaredge

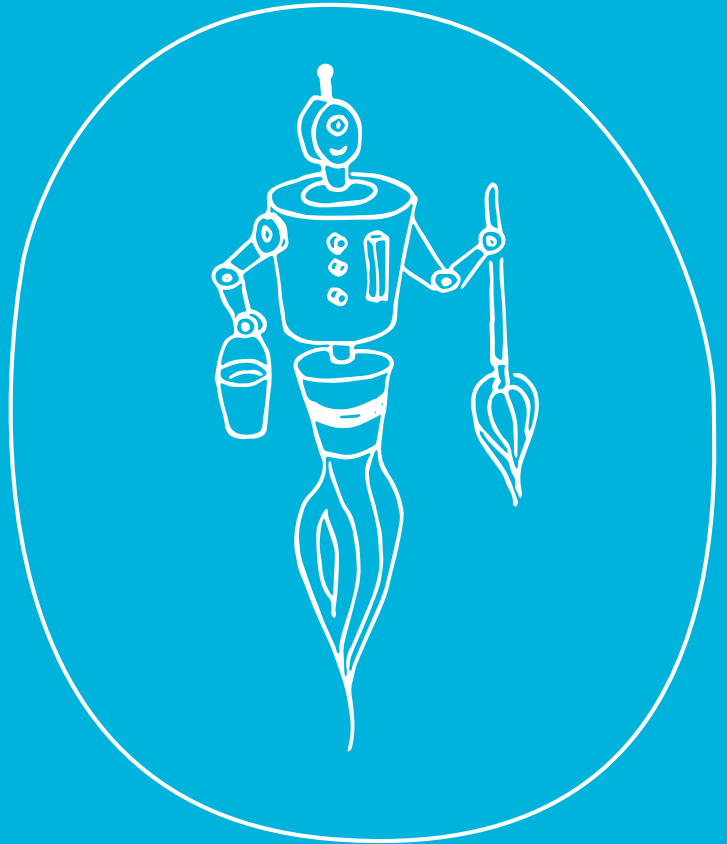
Free Fun for the Family!

- DMEA Board Election*
- Get to know your DMEA Board of Directors
- Recap of 2022 accomplishments
- Bar-b-que dinner
- Live Music
- Prizes, including an E-bike giveaway
- Games

*Ballots for the 2023 DMEA Board of Directors Election will arrive by mail this month. As a cooperative member, it is both your right and responsibility to vote for your board representatives. Vote by mail or in person at the Annual Meeting.

FIBER IS THE FUTURE

and the future is here.



Robots that do ALL our chores? Yes, please! We might not know exactly what the future will bring. But one thing is for sure: you need fast, reliable internet that stays fast and reliable no matter how many new gadgets you add.

ELEVATE[®]

elevateinternet.com • 844-386-8744

Elevate not yet available in all areas. Internet speeds up to 6 Gig for wired connections.

CONCERN FOR Community

COOPERATIVE PRINCIPLE #7



2023 Financial Reality Fair - Bite of Reality

The Financial Reality Fair is an annual event that gives local high school students from Montrose High, Olathe High, Peak Academy, Vista Charter School, and Black Canyon High School a taste of real-world financial scenarios of adult life. Students are randomly assigned a fictional adult life, including occupations, salaries, credit scores, spouses, children, student loan debt, credit card debt, and medical insurance payments. The teens then visit various stations to “purchase” their housing, transportation, food, clothing, utilities, and other needs. This hands-on event gives teens an opportunity to make financial decisions under the challenges of living on a budget. High school seniors that attend and complete the event also have the chance to apply for \$1,000 scholarships funded by NuVista Credit Union and Montrose Black Canyon Rotary.



How Elevate is helping

Elevate was a proud sponsor of the 2023 Financial Reality Fair, pledging \$1,000 to the event. This year's event took place on April 12 at Montrose High School. Four Elevate/DMEA staff members, Tiffany Stewart, Jodi Armendariz, Brooke Mathis, and Becky Mashburn, volunteered at the event, selling students their housing and utilities.



How you can help

Local businesses and organizations will have the opportunity to sponsor or volunteer at the 2024 event – just keep tabs on the NuVista Credit Union website www.nuvista.org.



Montrose Office
11925 6300 Road
Montrose, CO 81401
M, W, F; 8:00am-5:00pm
T & Th; 8:00am-6:00pm

Contact Us:
877-687-3632 | dmea.com |

Read Office
21191 H 75 Road
Delta, CO 81416
W; 8:00am-5:00pm



Your Board of Directors:

Bill Patterson, District 1	Kyle Martinez, District 2
Jacob Gray, District 3	Open Position, District 4
Kevin Williams, District 5	Damon Lockhart, District 6
Enno Heuscher, District 7	Stacia Cannon, North
Jock Fleming, South	

DMEA Board Meetings are open to all members and are generally held on the 4th Tuesday monthly beginning at 3PM with the public comment period at 5PM. Call 970-240-1212 to confirm date, time, and location.

DMEA is an equal opportunity provider and employer. If you wish to file a Civil Rights program complaint of discrimination, complete the USDA Program Discrimination Complaint Form, found online at ascr.usda.gov/complaint_filing_cust.html or at any USDA office, or call (866) 632-9992 to request the form. You may also write a letter containing all of the information requested in the form. Send your completed complaint form or letter to USDA by mail at U.S. Department of Agriculture, Office of Adjudication, 1400 Independence Avenue, S.W. Washington, DC. 20250-9410, by fax (202) 690-7442 or email at program.instate@usda.gov.

Cyber Safety

BE AWARE:
Don't fall victim to
cyber scams

THE SCAM: HERE, PHISHY, PHISHY

Email phishing scams come in all shapes and sizes: fake invoices, account expirations and upgrades, fake google docs, bank account issues, IRS refunds, and a few generous foreign princes looking to offload some cash. Regardless of which scheme they're using, scammers are looking to get you to click on a link or attachment to gain access to personal details and banking information or install a virus on your device.

A few obvious red flags tell you an email is a scam: generic greetings and closings, grammar and spelling errors, unsolicited attachments, emergency or threatening language, and unfamiliar hyperlinks. But not all

scam emails are this easy to spot, so always double-check the sender's email to ensure it is coming from a verified source. The same rings true for any links included within a suspicious email – you can view the URL by hovering over the link with your cursor without clicking.

Read more at elevateinternet.com/national-cybersecurity-awareness-month

Plant Trees **SAFELY**

Spring is an optimal time of year to dream up and achieve your landscaping masterpiece. Whether it is new trees or shrubs, a fence, or a new deck just remember these safety tips in your project planning:



**Know what's below.
Call before you dig.**

utilities. They will mark lines so you can safely dig and avoid turning your spring project into a disaster.

CALL 811 BEFORE YOU DIG

If any of your projects require digging – such as holes for plants, or setting posts – remember to dial 811 first and ask the call center to send staff out to locate underground

PLAN YOUR PLANTING

Before selecting and planting a tree, remember to look up to determine where the tree will be located in relation to overhead utility lines.

- ▶ Avoid planting within 20 feet of power lines. If planting is unavoidable, only plant shrubs and small trees that reach a mature height of 15 feet or less.
- ▶ Plant medium trees (under 40 feet when mature) at least 25 feet away from power lines.
- ▶ Plant large trees (over 40 feet when mature) at least 50 feet away from power lines.

