

THE PowerLines REPORT

1 | Tree Trimming

2 | Scholarship Recipients

3 | Tree Planting Guidelines

4 | Cyber Security With Giga-Pod

JUNE 2021

Preventing Outages One Tree at a Time

One of the largest contributors to power outages for our members—34% to be exact—and unexpected costs for DMEA is damage to our local grid caused by unchecked vegetative growth, aka trees. That’s why for the past several years, DMEA has been working to improve our vegetation management through an increased budget, contractor diversity, updated vegetation management guidelines, and lastly, by bringing on two in-house tree trimming crews. By doing so, DMEA is actively mitigating the risk factors associated with unchecked vegetative growth on our power distribution system.

Before bringing crews in-house, we made sure to learn from our successful co-op counterparts, and relied heavily on the model implemented by Holy Cross of Glenwood Springs. One of our key takeaways from their model was the additional pride taken in a job well done when crews live in the communities in which they also work. This benefit is already apparent in just the first few months our new vegetation crews have been on staff.

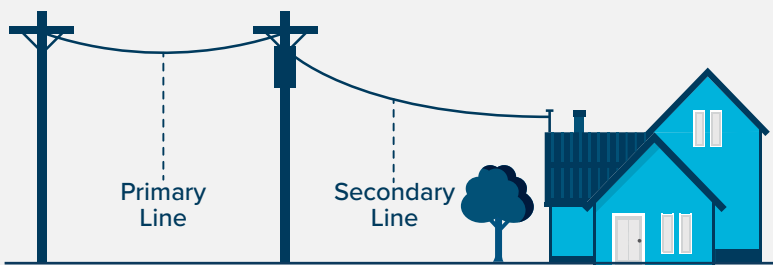
As with any vegetation management program, its main purpose is risk management. For DMEA, this means power reliability, fire mitigation, and their associated costs.

Travis Swaim, DMEA’s new Vegetation Management Supervisor, is addressing these risk factors with a newly devised and implemented five-year circuit tree trimming strategy.

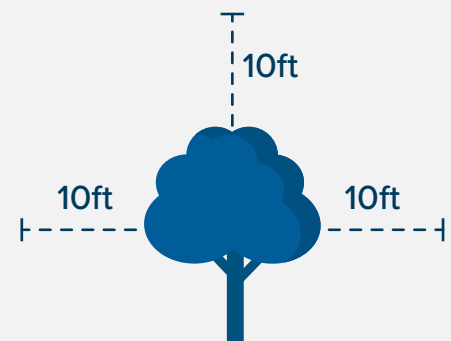
This new approach focuses first on removing potentially hazardous trees. If removal is not an option, DMEA will then trim trees located within our rights-of-way to an extent that they will only need to be trimmed every five years. It thoroughly covers the entire 3,000+ miles of electric lines and fiber cables across DMEA’s service territory in a methodical and repetitive pattern preventing issues before they arise.

DMEA has recently embarked on this aggressive approach, and members will now regularly see our crews with their trucks and chippers clearing trees and other vegetation in alleyways and along residential streets. In harder to reach areas, our tree crews will also climb trees to prune and remove them.

Investing in this new vegetation management program is a testament to your DMEA Board of Directors’ commitment to reliability, risk management, and cost containment.



DMEA vegetation management crews are responsible for maintaining all primary lines and, as needed, transmission lines. It is the property owner’s responsibility to maintain secondary lines that run from the transformer to the home.



DMEA will trim all trees to a minimum approach distance (MAD) of 10-15 ft., of space on all sides.

CONGRATS DMEA SCHOLARSHIP RECIPIENTS

DMEA, in partnership with the Montrose Community Foundation, has selected its 2020-2021 scholarship recipients. This year, more than \$50,000 was available for local students to pursue post-high school education.

DMEA's scholarships provide local students with funds to attend a variety of higher education institutions including private and public universities, liberal arts colleges, vocational and trade schools, community and junior colleges, institutes of technology, art and design schools, and even online colleges. Join us in congratulating this year's recipients!



Special thanks to Guzman Energy for helping fund our 2020-2021 scholarships.



Alyssa Bales



Cora Blowers



Kyle Bronec



Jacen Brown



Elaine Cannon



Nolan Egging



Adair Ela



Zebadiah Etter



Gavin Hall



Amelia Hickman



Jorryn Liberto-Hall



Jamie Marsh



Ryan Myers



Berrie Reams



Tawny Roberts



Joshua Simpson



Theresa Tafoya



Zachary Vincent



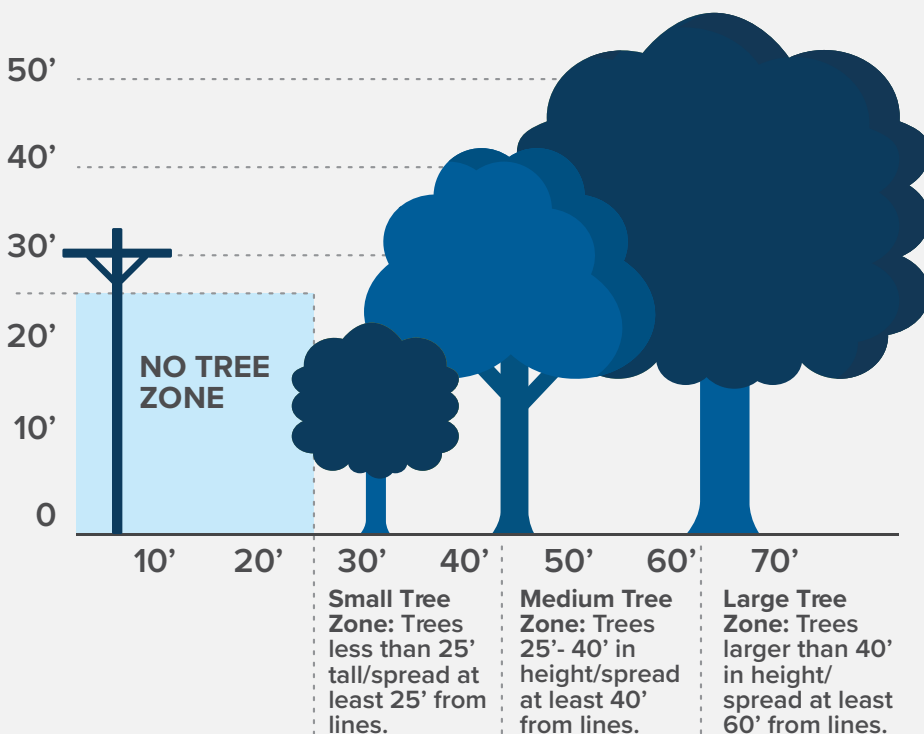
Eric Yergenson



Samantha Wollert

**Not pictured: Mahlia Perez*

TREE PLANTING GUIDE



Help us keep our power lines clear of trees by following better practices when you plant trees. With lifespans ranging from 50 to 5,000 years, you'll want to plant your tree in a place it can flourish long-term, not under power lines.

- Don't plant trees within 25 feet of DMEA's power lines.
- Only shrubs or small trees (growing less than 20 feet high) should be planted within 25 feet of power lines.
- Don't plant any vegetation around DMEA ground equipment, such as poles, transformers or junction boxes.
- Call 811 before you dig to locate any buried utility lines.
- Report any trees growing into power lines or other DMEA equipment immediately to 877-687-3632. Never trim these trees yourself.



LEADING TECHNOLOGY FROM A LOCAL TEAM

Meet your local tech team

Elevate Internet prides itself on being a local company powered by local people. With more than 70 years of combined experience, Elevate's technology and network team brings together some of the best and brightest minds around - all working for you!



DAKOTA COLE

Position: Network Engineering and Operations Supervisor

How long have you been working for Elevate? 4 years, 4 months

What do you enjoy doing outside of work? EV road trips, finding awesome restaurants, landscaping, camping/hiking, and crypto mining.

Best tech tip: If you don't already have one, get an Elevate Giga-Pod. Its ability to constantly adapt and improve Wi-Fi performance is far superior to any Wi-Fi solution on the market today! Plus, you'll get security features, like parental controls, content filters, and password management.



KELLY WALTERS

Position: Senior Network Engineer

How long have you been working for Elevate? 4 months

What do you enjoy doing outside of work? Playing softball, hiking, golfing, and pretty much anything outside.

Best tech tip: Ignore the electronics and go outside.



JOSH BUNKER

Position: Network Operations Support Analyst

How long have you been working for Elevate? 3 years

What do you enjoy doing outside of work? Spending time exploring the mountain peaks, forests, rivers, canyons, and crags of Western Colorado. Spending time with family. Performing music at various venues from time to time (I play guitar and sing).

Best tech tip: If you have a printer at home, make sure that you turn "Direct Wi-fi" or "Direct Wireless Print" off on it. Your other devices will thank you for it.



CRAIG METCALF

Position: Network Operations Support Analyst

How long have you been working for Elevate? A little over 4 years

What do you enjoy doing outside of work? Going to rock concerts, brewing beer, and Netflix binges.

Best tech tip: If you can hardwire into your router, then do.



TRAVIS STOCK

Position: Network Operations Support Analyst

How long have you been working for Elevate? 4 months

What do you enjoy doing outside of work? Reading, watching movies, visiting friends, and geeking out with IT stuff!

Best tech tip: Think you have an internet outage? First, check to see if you have connection issues on multiple devices and, if so, reboot your router by unplugging the power source to either your router or primary Giga-Pod for a few minutes. Still no Wi-Fi? Call us 24/7 at 844-386-8744.



ELEVATE™ GIGA-POD

Cyber Security

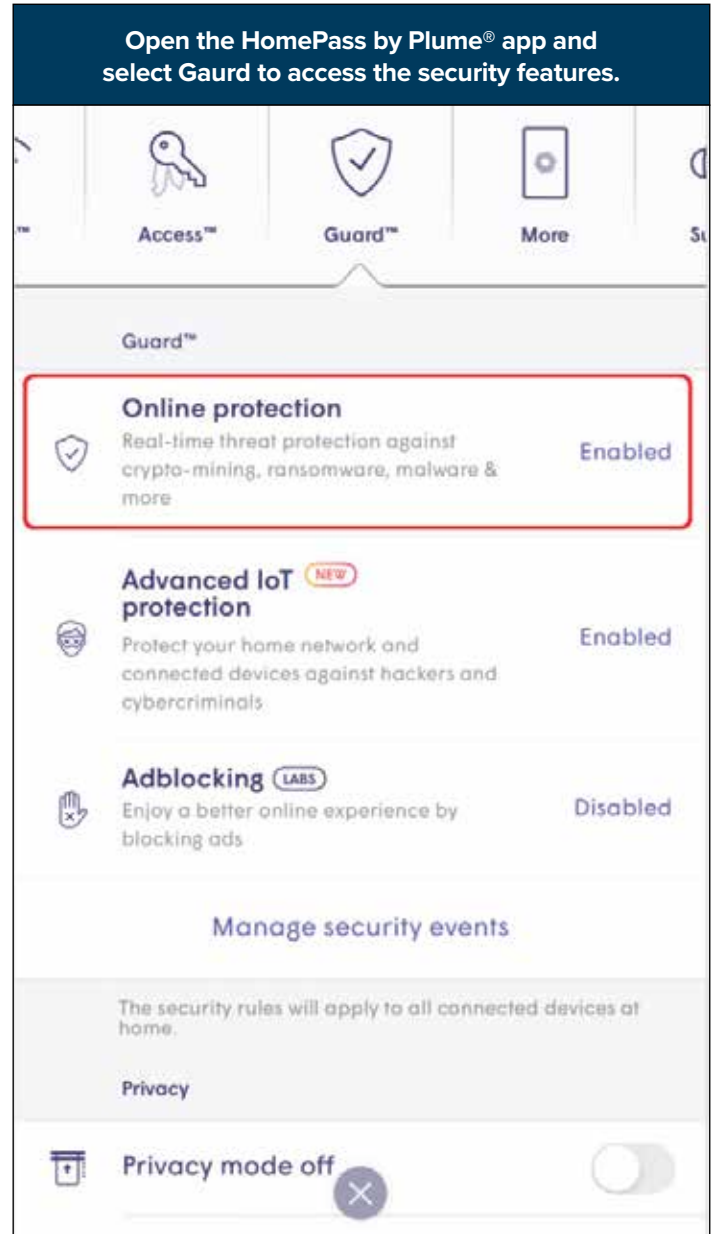


Every Elevate Giga-Pod comes with a free membership of HomePass by Plume®, an all-inclusive Wi-Fi manager that gives you ultimate control, including unparalleled internet security.

The Online Protection feature will protect your devices from malware sites, botnets, spyware, spam, phishing, keyloggers, monitoring, proxy avoidance, anonymizer, and other harmful attacks on your network.

This feature is enabled on all devices by default, but can be customized on the device level for an individualized experience.

Other security features include ad blocking and the ability to block or approve specific websites across your network or for individual users.



Get an Elevate Giga-Pod or learn more at www.elevateinternet.com/elevate-giga-pod.



Montrose Office
11925 6300 Road
Montrose, CO 81401
M, W, F; 8:00am-5:00pm
T & Th; 8:00am-6:00pm

Read Office
21191 H 75 Road
Delta, CO 81416
M & W; 9:00am-4:00pm

Contact Us:
1-877-687-3632 | www.dmea.com |

Your Board of Directors:

Bill Patterson, District 1
Brad Harding, District 3
Chris Hauck, District 5
Enno Heuscher, District 7
Jock Fleming, South
Kyle Martinez, District 2
Ken Watson, District 4
Damon Lockhart, District 6
Stacia Cannon, North

DMEA Board Meetings are open to all members and are generally held on the 4th Tuesday monthly beginning at 3PM with the public comment period at 5PM. Call 970-240-1212 to confirm date, time, and location.

DMEA is an equal opportunity provider and employer. If you wish to file a Civil Rights program complaint of discrimination, complete the USDA Program Discrimination Complaint Form, found online at www.ascr.usda.gov/complaint_filing_cust.html or at any USDA office, or call (866) 632-9992 to request the form. You may also write a letter containing all of the information requested in the form. Send your completed complaint form or letter to us by mail at U.S. Department of Agriculture, Office of Adjudication, 1400 Independence Avenue, S.W. Washington, DC, 20250-9410, by fax (202) 690-7442 or email at program.instake@usda.gov.



DMEA COOKS!

Featuring favorite recipes from our DMEA family

The BEST Buttermilk Pancakes:

Skyler Shepard, Customer Service Representative



Ingredients:

- 2 c all-purpose flour
- 2 tsp baking powder
- 1 tsp baking soda
- ½ tsp salt
- 2 tbsp sugar
- 2 large eggs, beaten
- 3 c buttermilk
- 4 tbsp butter, melted plus more for the griddle

Directions:

Heat griddle to 350°. Whisk together flour, baking powder, baking soda, salt, and sugar in a medium bowl. Whisk together eggs, butter, and buttermilk in a large bowl. Add dry ingredients and whisk some more. Pour batter onto a buttered griddle. Flip the pancakes over when they have bubbles on top and are slightly dry around the edges. Cook for one minute more.



WIN A SKATEBOARD!

Participate in DMEA's all-new safety program, PLAY IT SAFE. The contest is open to kids in K through 5th grade. Each month, DMEA will announce a new electrical safety problem that your student can research and resolve. The best submission wins, and the prizes are awesome!

JUNE SAFETY DILEMMA

It's a beautiful day to fly a kite!
When picking the perfect spot to fly, what should you look out for?

What to submit:

This month, your submissions must be in the form of a drawing. Drawings can be submitted at www.dmea.com/safety-competition.

When to submit:

Entry period is June 1, 2021 - June 30, 2021.

Who can participate:

Kids in grades K-5th

What you can win:

This month's prize is a skateboard!

